

GREATMATS

Sundance Horse Stall Mat Interlocking - Installation Instructions

Barn floor preparation is one of the most important steps of the installation process. The sub-floor of your stall needs to be smooth, hard and level. Wood, concrete and asphalt all make excellent bases for rubber matting. However, most of our customers forgo the cost of these materials and choose to work from a natural base. Natural bases such as dirt, clay, or sand are not firm enough to provide the proper amount of support needed under stall matting. You must remember that your rubber stall floor will contour to whatever is under it. "Dirt floors" have a tendency to form "soft spots" and give way under stall mats. These "soft spots" will cause the stall floor to dip or buckle making it hard to clean, damaging the mats, and leading to unsafe conditions in the stall. To prevent this from happening we suggest that the "dirt floor" be covered with 4 to 6 inches of a crushed stone base. This base material should be a ¼" down or 3/8" minus and have a good mixture of dust. It goes under a few different names such as stone dust, road base, screenings or ¼" minus. Stone dust can be found at any local quarry and is relatively inexpensive.



Pictured above is an uneven dirt sub-floor that we found in a customer's stall. I am sure you can see why it would not be ideal to lay your new stall flooring over this rough natural base.

Sundance Horse Stall Mat Interlocking - Installation Instructions



Here is an example of the type of damage that a horse can do to an improperly installed stable floor. This matting was laid over the uneven dirt base previously pictured.

In many cases it will be necessary to re-level the dirt floor before adding the stone dust to the stalls. This is done with a shovel, pick axe, garden rake, and a little bit of elbow grease.



Sundance Horse Stall Mat Interlocking - Installation Instructions

Once the dirt floor has been leveled, it is time to bring in the stone dust. The stone dust should be spread evenly across the stall floor about 4 to 6 inches deep.



The stone dust can be brought into the stall using a front-end loader or a wheelbarrow.

After you have brought in your stone dust, you will want to spread it and level it using an old 2'x 4' and a garden rake. Start at one end of the stall and drag the stone dust back towards the other wall



Sundance Horse Stall Mat Interlocking - Installation Instructions

Using an old 2'x 4' to help spread the stone dust will also show you if there are any low spots in the floor where you might need to add more of the crushed stone base.



Check your sub-floor to make sure you are spreading the stone dust evenly and level.

Now that the sub-floor has been covered with the stone dust it is time to tamp it down. (If the crushed stone base is extremely dry it may be necessary to wet it down first.) We suggest using a vibrator-compactor for this step. They can be rented at any local rental supply store and will save you a lot of time and labor. This machine will also make sure that the floor is evenly compacted across the entire area. A hand tamper is a great tool to have for use in the corners and other tight spots.



A finished sub-floor should be hard, smooth, and level. You should be able to walk across it without leaving a footprint.

Now that the sub-floor of your stall has been prepped, it is time to begin custom fitting the rubber matting to your stall floor. Properly fitting your new stall mat is just as important as picking the right stable flooring for your particular project. Horse stall matting is an investment in your barn, and a correctly installed floor will last 15 to 20 years.

Sundance Horse Stall Mat Interlocking - Installation Instructions

Custom Fitting your New Stall Flooring

The first step in custom fitting your new stall flooring is to assemble the proper tools. You will need a 4' carpenter's "T" square, hammer, tape measure, BIC White-out pen, chalk line, utility knife, heavy duty razor blades, kneepads and a pair of gloves.



These items can be purchased at any local home improvement store. Take special note of the BIC White-Out pen. The BIC White-Out pen is best for marking on the black rubber mats. Most importantly, it washes right off leaving no mess behind.



Notice how these installers have folded the mat in half and are grabbing it by the corners. They then put their knees into the mat to bow it away from themselves. Finally, they lift the mat from the ground. This "bowing" technique will not only make it easier to move the mat through the stall door, but greatly reduces the amount of weight put on the individuals carrying the mats.

MEASURE TWICE - CUT ONCE!

The first step of course is to measure your stalls. Never guess at your stall size or take the contractor's word for it, and by all means, never assume that all of your stalls are the same size. It is very common for stalls to be out of square or vary from one side of the barn to another. Also, make sure you are measuring from the widest or longest points in the stall. You will want to allow for enough rubber to extend out into doorways and thresholds. It may be helpful to jot these measurements down on a piece of paper so you can reference them later.

Sundance Horse Stall Mat Interlocking - Installation Instructions



Measuring first will prevent you from making costly mistakes later. A properly installed stable floor should run wall to wall and fit as tight as possible. The key is to build large and cut to fit.

Step two is moving the first mat into place. It is always best to start along the back wall and work your way across and forward. This will insure that you are getting a tight fit in the doorways and other areas of high traffic.



Now you can move the second mat in and interlock it to the edge of the first mat. Align the interlocking tabs and then take your hammer and tap them into place. If you are laying your matting over a stone dust floor you will want to take care not to beat on the tabs too hard. This will cause dents in the stone dust below and make it difficult to lock the mats together. Gently tapping the tabs will do.

Sundance Horse Stall Mat Interlocking - Installation Instructions

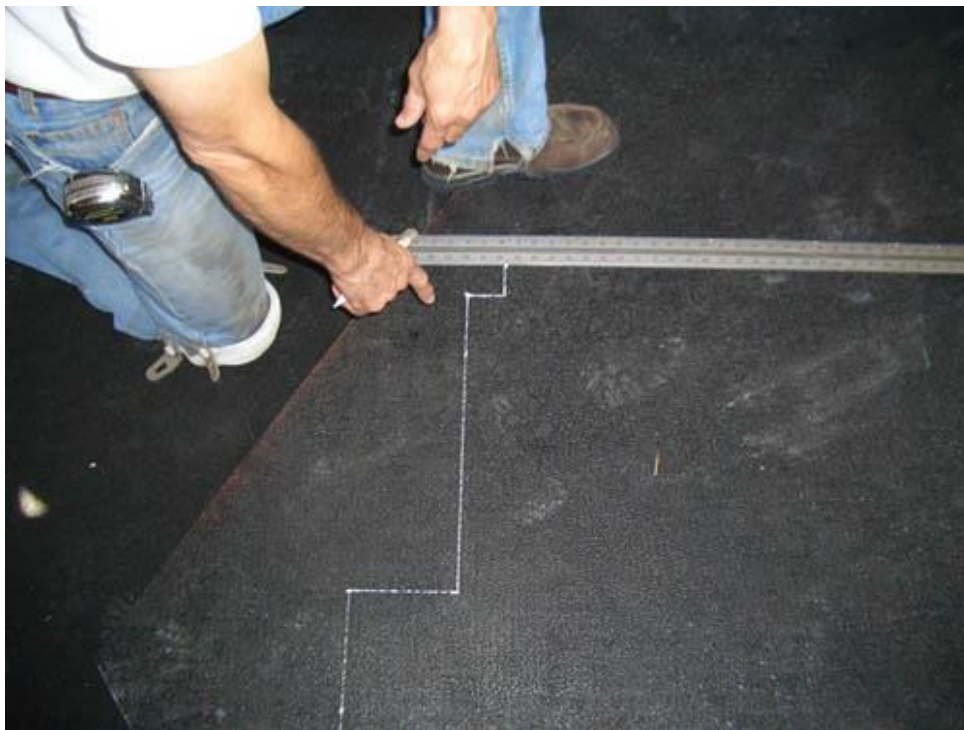


You will now want to measure from the female end of an interlocking tab on the mat over to the furthest point on the wall. Take a measurement from both the top and the bottom edges of the mat. (This will tell you if your wall is out of square.) Take notice of any objects or protrusions that will need to be cut around. (posts, etc.)



Step four is to mark your mat for cutting. Measure your mat from the male end of an interlocking tab. The more detailed you can mark your mat; the less opportunity there is to make a mistake. Use the BIC White-Out pen to "sketch" your cuts out on the stall mat. It is also a good idea to take a moment and re-check your measurements before you begin cutting. Remember: MEASURE TWICE - CUT ONCE!

Sundance Horse Stall Mat Interlocking - Installation Instructions



After you have your mat "sketched" out, it is time to begin cutting. Place your "T" square along the line to be cut. Put the blade of your utility knife along the edge of the "T" square and using it as a guide, begin scoring the line to be cut with your knife. Score this line 3 to 5 times until you have cut over half way through the rubber.



Note the position of the installer's hands and feet. You can either use your foot or knee to hold the end of the "T" square in place. Your free hand should always be towards the top of the "T" square and out of the way of the knife's blade.

Sundance Horse Stall Mat Interlocking - Installation Instructions

Step five is to make the final cut. Fold over the piece of the mat that is being cut off and open up the seam that you created by scoring the mat. Start at the end of the mat, place the blade of your utility knife inside of the seam and continue to cut the line from one end to the other.



Your third mat can now be locked into place.

Before laying your fourth and fifth mats, be sure to take measurements from the female end of an interlocking tab to the furthest point on the wall. Take these measurements from both corners of the mat just as you did previously. If the mats need to be trimmed, you should "sketch" out your measurements on the rubber and cut them as stated above. Once this has been done, you can interlock your mats respectively.

Sundance Horse Stall Mat Interlocking - Installation Instructions



By creating this "L" shape you have given yourself points from which you can measure in both directions. This is an important step in fitting your last mat tightly into the doorway of the stall.

It is now time to address the last and most important mat, the doorway mat. When taking measurements for this stall mat you will want to allow for enough rubber to extend out into the doorway or threshold. The exposed edge of this stall mat should butt tightly up against the stall door or threshold area. Extending the rubber to this point will prevent your horse from pawing at the edge of the doorway mat.



A properly installed doorway mat should extend out and tightly butt up against the stall door or threshold.

Sundance Horse Stall Mat Interlocking - Installation Instructions



Once installed, the Sundance interlocking floor appears seamless and one piece.

Greatmats.com
117 Industrial Ave
Milltown, WI 54858
Toll free: 877-822-6622
Direct voice: 715-653-6100
info@greatmats.com