

Installing a Greatmats Staylock Tile is a snap. We recommend reading these instructions thoroughly and completely before beginning. Feel free to contact our customer service team at 877-822-6622 or info@greatmats.com if you have questions.

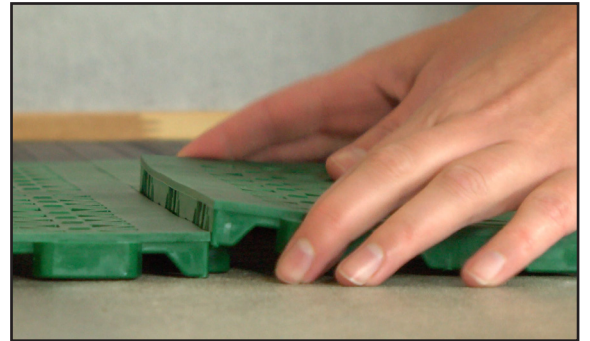
Supplies Needed 1. Tape Measure 2. Pen or Marker 3. Straight Edge 4. Sharp Utility Knife

Installation

1. Place first tile in a corner with loop sides facing out.



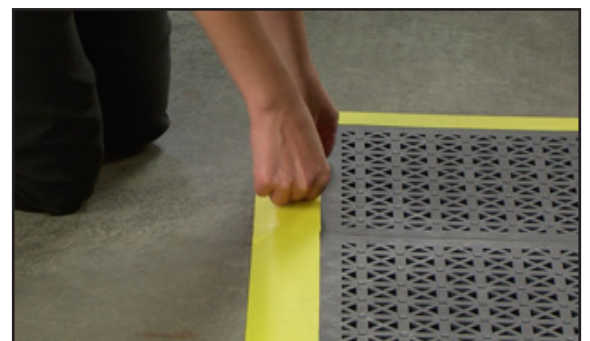
2. Keeping all additional tiles facing in the same direction, place tabs of new tiles over loops of already laid tiles and push down until they pop into place.



3. Work out evenly in both directions.



4. Add border strips in same manner if desired.



Cutting Tiles

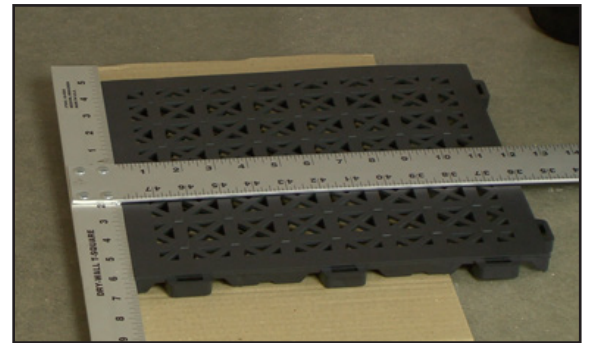
1. Using tape measure, measure distance between existing tiles and wall.



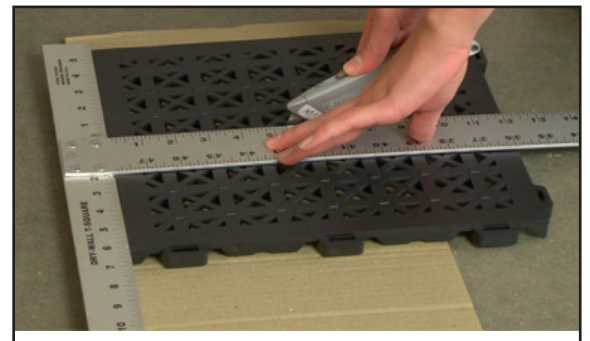
2. Using pen or marker, mark that distance on the tile you'd like to cut, keeping in mind direction of the tile.



3. Using straight edge, draw line(s) where you'd like to cut.



4. Cut along lines with the sharp utility knife using a series of shallow scores until completely through the tile.



See the installation video at
www.greatmats.com/tiles/decking-tiles.php