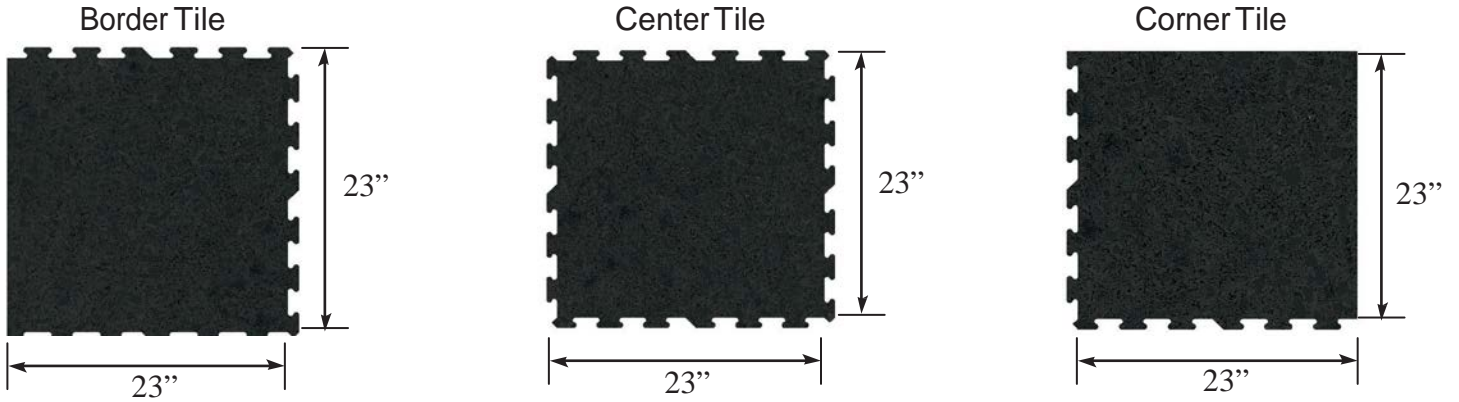
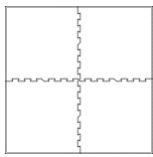


Interlocking Tiles Layout Options



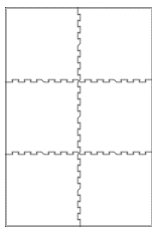
Interlocking Tiles are measured from the inside edge of the interlock on one side to the outside edge of the interlock on the opposite side of the tile.

46" x 46"



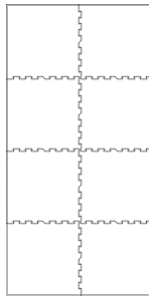
4 Corners
4 Total Tiles

46" x 69"



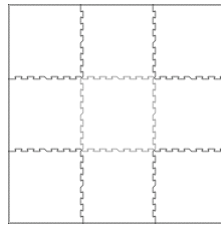
4 Corners
2 Borders
6 Total Tiles

46" x 92"



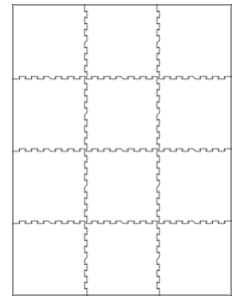
4 Corners
4 Borders
8 Total Tiles

69" x 69"



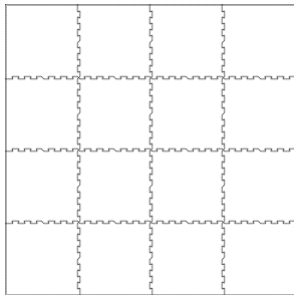
4 Corners
4 Borders
1 Center
9 Total Tiles

69" x 92"



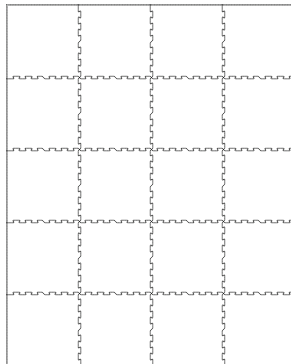
4 Corners
6 Borders
2 Centers
12 Total Tiles

92" x 92"



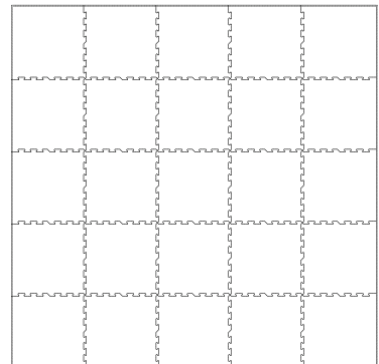
4 Corners
8 Borders
4 Centers
16 Total Tiles

92" x 115"



4 Corners
10 Borders
6 Centers
20 Total Tiles

115" x 115"



4 Corners
12 Borders
9 Centers
25 Total Tiles