

### Features

High-quality rubber sport flooring for cardio and weight areas  
 Easy to clean surface  
 Extremely durable and long-lasting  
 Dowel connection system allows for free floating installation, no adhesive necessary  
 Even color distribution and state-of-the-art precision quality edges provide a seamless look  
 Common Uses—weight rooms, ice arenas, health clubs, locker rooms, exercise areas, dugouts, live stock and agricultural settings

### Specifications

#### Material

Laminated rubber with 100% post-consumer black recycled rubber and EPDM rubber granules

#### Tile Size

Square Edge: 38" x 38"

Interlocking: 37" x 37"

#### Total Thickness

10 mm (approx 3/8")

12 mm (approx 1/2")

#### Wear Layer Thickness

4 mm (approx. 1/4")

#### Weight

Varies by thickness

#### Slip Resistance (ASTM C1028)

0.79 Dry and 0.81 Wet

**Critical Radiant Flux (ASTM E648):** Class 2 (Class I product made with fire retardant available by special order)

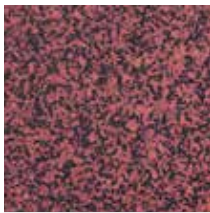
#### Custom

Colorful inlaid logos available, consult our Product Specialists for details.

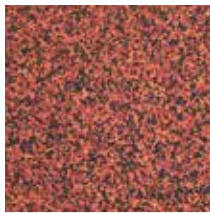
### Possible LEED v 2009 Credits

MR Credit 4 (1-2 points)

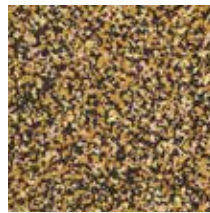
MR Credit 5 (1-2 points)



Rush Red



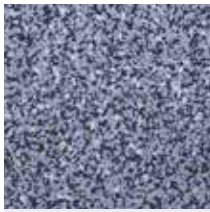
Offense Orange



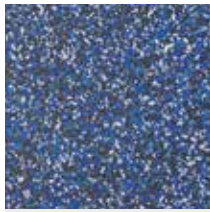
Game Gold



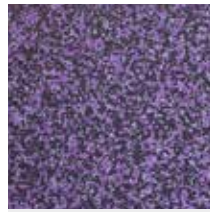
Goal Green



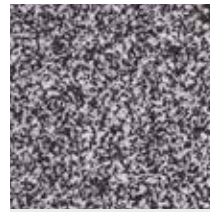
Blast Blue



Blitz Blue



Power Purple



Grit Gray

### Logos

