

## Installation of Plastex Matting Rolls

For a video of installation, please visit this link

<https://youtu.be/Ai0XqBHHZml>

### Before You Begin

Lay the matting and edging out flat in a clean dry area to acclimate and relax.

This may take up to 24 hours.

In a cold environment, use a heat gun and weights to help relax the matting, PVC edging, and snap track.



### Installation of Matting

Matting is designed to be loose laid without being attached to the floor underneath. Accessories such as PVC edging, and snap track require the use of cold weld paste to permanently bond to the matting.

Connector clips can be used to temporarily join mats together.

### Cutting the Mat

Measure the length and width of the mat needed.

Cut using a sharp utility knife and a straight edge.



### Using Connector Clips

Connector clips are designed to connect mats together. Connector clips should be placed at regular intervals. No adhesive is necessary.



## Installation of Snap Track Joining Strip

The two-part snap track allows mats to be joined end-to-end or side-to-side. There is a male and female side to the snap track.

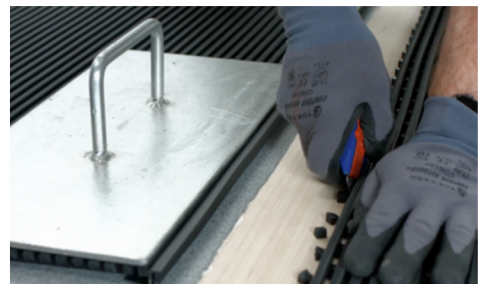
Measure both parts of the snap track to match the length of the matting. Cut with a sharp utility knife.



On one side of the snap track, apply cold weld paste to the full length of the snap track then press mat in place. Apply weights and leave to dry for **30 minutes**.



Trim any protruding base bars so the snap track sits flush. On the second part of the snap track, apply cold weld paste and press the mat in place. Apply weights and leave to dry for **30 minutes**.



Once the cold weld paste is dry, snap the two sides together by joining the male/female snap track pieces together.



## Installation of PVC Edging

Measure the PVC edging to fit around the mat. Mat needs to sit flush with the edge of the mat.



To make the corner, miter the PVC edges at a 45-degree angle. Use a straight edge and a sharp utility knife to the cut.



Apply cold weld paste to the mitered edge. Apply mesh tape to the corner and add weights for **30 minutes** until dry. Repeat for each corner.



Apply cold weld paste to the PVC edging to connect the edging to the matting. The base bar should sit flush to the edge. Apply weights and allow to dry for **30 minutes**. Repeat on each edge.



Carefully bend back the edging and fill the gaps with cold weld paste. Leave to completely dry for **24 hours**.





## Installation of Aluminum Edging

Join the edging sections together with the inserts to make the right size frame for the mat.

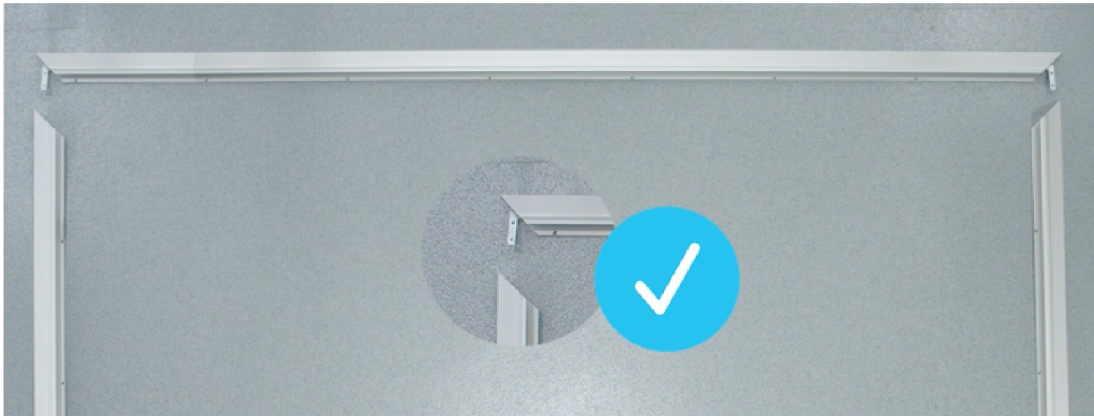


Miter the corners at a 45-degree angle with a power saw. Join using the right angle inserts.

Use a rubber mallet as the inserts are a tight push fit.



When completing the final side of the frame, make sure you fit both inserts into the single remaining edge.



Mark your drill holes in the floor where you want to install the edging.

Drill the holes 6mm in diameter and 36mm deep.



Insert plugs into the drill holes.



Fix the aluminum frame to the floor with screws.



Position one end of the mat under the edging strip and lay in the aluminum frame.



For a video of installation, please visit this link

<https://youtu.be/Ai0XqBHHZml>

# GREATMATS

117 Industrial Ave  
Milltown, WI 54858

877-822-6622

info@greatmats.com

Updated April 2024