

# AcustiCORK™ RC Series

## 5&10mm Rubber/Cork Sound Control Underlayment

## INSTALLATION INSTRUCTIONS Ceramic Tile - Direct Bonded on a Concrete Slab Subfloor

The following installation instructions are a recommendation, but are not intended as a definitive project specification. They are presented in an attempt to be used with recommended installation procedures, as published by the Tile Council of America and as specified in the American National Standards Institute.

### SUBFLOOR

1. All subfloor work should be in accordance with the recommended procedures as published by the Tile Council of America and the American National Standards Institute (ANSI).
2. Concrete subfloor should be level, properly sloped and structurally sound.
3. Inspect concrete subfloor for any open cracks and fill with a high-grade epoxy filler.
4. Remove any excess concrete lumps or residue that may interfere with the installation of the AcustiCORK RC Series underlayment.

### PERIMETER ISOLATION STRIP

1. Install the precut 3/4" wide, 6mm thick perimeter isolation barrier vertically around the perimeter of the entire floor including any openings or protrusions such as electrical boxes, heating ducts, cold air returns, columns or pipes in the subfloor installation. The perimeter isolation strip **MUST be installed prior to AcustiCORK RC Series underlayment being installed.**
2. Remove the release liner from the self-adhesive backing and place flat against the wall, flush to the floor.
3. After positioning, press the isolation barrier firmly into place at all wall and vertical partitions surrounding the perimeter using the AcustiCORK underlayment material.
4. Never mechanically fasten the isolation barrier, as this will severely diminish the acoustical performance of the entire sound rated floor system.
5. After the finished floor is installed the perimeter isolation barrier should be trimmed flush with the surface of the finished floor.

### ACOUSTICORK RC SERIES UNDERLAYMENT for DIRECT BONDED CERAMIC TILE FLOOR

1. Cut the 5mm or 10mm thick AcustiCORK RC Series material to the desired length and position the material in the space to be covered.
2. Butt the AcustiCORK RC Series material against the perimeter isolation barrier already installed at the floor/wall junction.

3. Pull the loose laid material back at least half the length of the cut material. Using a properly sized U or V-notched trowel (minimum 3/32") apply a 100% Polyurethane based wood flooring adhesive, gently place rolled back section into the bed of adhesive and imbed it into the adhesive. Repeat the process for the other half of the sheet, making sure there is 100% adhesive coverage on the subfloor. Roll in both directions with a 75 or 100# floor roller to remove any entrapped air. **(As an alternative a 118.4 thin-set mortar can be used, with a minimum 1/8" V notch trowel. If this option is selected it is important to protect the installation from foot traffic for a minimum of 48 hours.)**
4. Repeat the process for the balance of the room.
5. Proceed to cover the entire room, making sure the underlayment is tightly butted together, without gaps. Roll the floor area in both directions using a 100# roller; to endure the underlayment is firmly embedded in the adhesive. **Never mechanically fasten the underlayment to the subfloor, as this will severely diminish the acoustical value of the product.**
6. After completion, the AcustiCORK RC Series underlayment should cover the entire floor area without gaps and be securely bonded with the joints tightly butted.

### CERAMIC TILE INSTALLATION

1. Follow the tile and setting material manufacturers recommended instructions for the installation of the finished floor tile conforming to ANSI A108.1 A, B, C and A108.5, depending on the method of installation. Direct bonded applications of tile should be installed with a Latex Modified Thin-Set **High Performance Mortar meeting or exceeding ANSI standard 118.4.**
2. After the tile floor is installed and grouted, visually inspect and remove, where necessary and excess mortar or grout that is in contact with any walls or protrusions in the floor. Failure to do so may greatly diminish the acoustical performance of the system.
3. Trim the Perimeter Isolation Barrier, previously installed, flush with the surface of the finished floor.
4. Prior to the installation of any base or trim, a bead of non hardening acoustical grade sealant should be installed on the top edge of the trimmed Isolation Barrier.
5. If a tile wall or cove base is to be installed, **the space between the floor tile and the tile base should not be grouted.** A non-hardening flexible color matching sealant should be used to fill this joint.
6. If baseboard or shoe molding detail is required, leave a minimum 1/8" gap between the finished floor and the bottom of the shoe or baseboard. This gap can be filled with a non-hardening, color matching, paintable or clear Acoustical Grade Sealant.

## AcustiCORK™ PRODUCTS

### Sound Control Underlayment & Crack Suppression Membrane

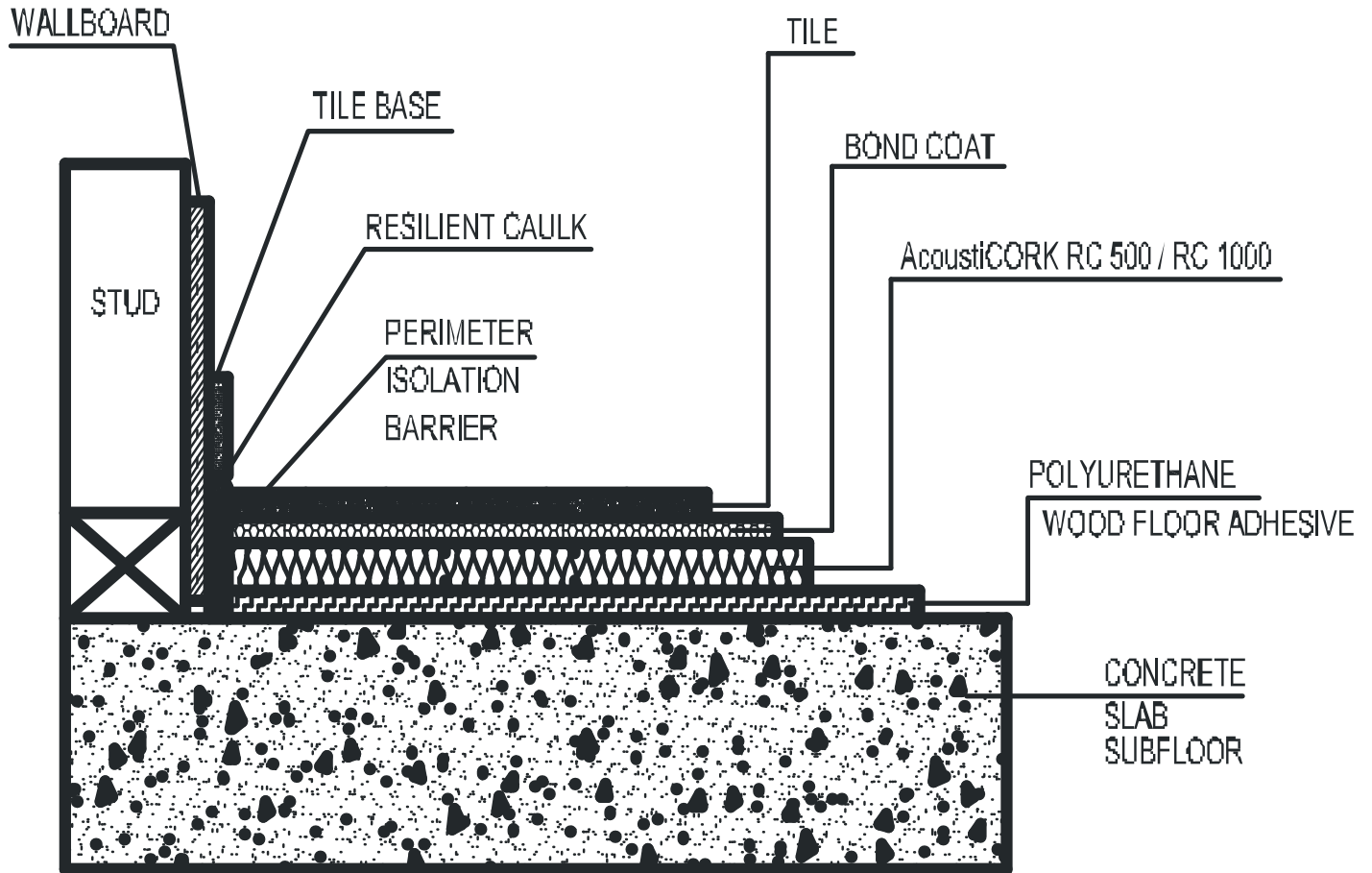
26112 110th Street • PO Box 25 • Trevor, WI 53179 • 1-800-558-3206 • 1-262-862-2311 • FAX 1-262-862-2500

Visit our Website at [www.acousticorkusa.com](http://www.acousticorkusa.com) for the most complete information on AcustiCORK™

# AcustiCORK™ RC Series

5&10mm Rubber/Cork Sound Control Underlayment

## INSTALLATION INSTRUCTIONS Ceramic Tile – Direct Bonded on a Concrete Slab Subfloor



## AcustiCORK™ PRODUCTS

Sound Control Underlayment & Crack Suppression Membrane

26112 110th Street • PO Box 25 • Trevor, WI 53179 • 1-800-558-3206 • 1-262-862-2311 • FAX 1-262-862-2500

Visit our Website at [www.acousticorkusa.com](http://www.acousticorkusa.com) for the most complete information on AcustiCORK™

# AcoustiCORK™ RR300/RC500

3.2mm Rubber & 5mm Rubber/Cork Sound Control Underlayments

**INSTALLATION INSTRUCTIONS**  
Floating Wood, Cork or Laminate  
Floors on a Concrete Slab Subfloor

The following installation instructions are a recommendation, but are not intended as a definitive project specification. They are presented in an attempt to be used with recommended installation procedures as published by the National Oak Flooring Manufacturers Association (NOFMA) and the National Wood Flooring Association (NWFA).

## **SUBFLOOR**

1. All subfloor work should be in accordance with the recommended procedures as published by NOFMA and the NWFA.
2. Concrete subfloor should be level, properly sloped and structurally sound.
3. Inspect concrete subfloor for any open cracks and fill with a high-grade epoxy filler.
4. Remove any excess concrete lumps or residue that may interfere with the installation of the AcoustiCORK underlayment or the finished floor.

## **TESTING FOR MOISTURE**

1. Test the subfloor for excessive moisture prior to the installation of the AcoustiCORK underlayment.
2. If excessive moisture is present (normally >3 lbs. per 1000 s/f in 24hrs) in the subfloor, a vapor-retarding barrier must be installed to correct the problem. Consult the project architect or flooring manufacturer for details.

## **VAPOR RETARDING BARRIER**

1. Consult the most recent NOFMA & NWFA Installation Manuals for methods and materials associated with the use of vapor retarding barriers.

## **PERIMETER ISOLATION BARRIER**

1. Install the precut 3/4" wide, 6mm thick perimeter isolation barrier vertically around the perimeter of the entire floor including any openings or protrusions such as electrical boxes, heating ducts, cold air returns, columns or pipes in the subfloor installation. The perimeter isolation strip **MUST be installed prior** to the AcoustiCORK underlayment being installed.
2. Remove the release liner from the self-adhesive backing and place flat against the wall flush to the floor.

3. After positioning, press the isolation barrier firmly into place at all wall and vertical partitions surrounding the perimeter using the AcoustiCORK underlayment material.
4. Never mechanically fasten the isolation barrier, as this will severely diminish the acoustical performance of the entire sound rated floor system.
5. After the finished floor is installed, the top edge of the isolation barrier should be trimmed flush with the surface of the finished floor.

## **ACOUSTICORK RR300 or RC500 UNDERLAYMENT for FLOATING WOOD or LAMINATE FLOORS**

1. Cut the 3.2mm AcoustiCORK RR300 or 5mm RC500 material to the desired length and position the material in the space to be covered.
2. Butt the AcoustiCORK underlayment against the perimeter isolation barrier already installed at the floor/wall junction
3. Proceed to cover the entire room, making sure the sheets are tightly butted together, without gaps. Tape the joints with duct or fiberglass mesh tape. **For this type of installation it is recommended that the sheets not be glued to the subfloor.** Never mechanically fasten the sheets to the subfloor, as this will severely diminish the acoustical value of the product.
4. After completion, the AcoustiCORK RR300 or RC500 underlayment should cover the entire flooring area without gaps and with the joints securely taped.

## **FLOATING WOOD FLOOR INSTALLATION**

1. Follow manufacturers recommended instructions for the finished floor, including any vapor retarding membrane as required by the manufacturer.
2. If a baseboard or shoe molding detail is required leave a minimum 1/8" gap between the finished floor and the bottom of the baseboard and any shoe moldings. This gap must be filled with a non-hardening, color matching, paintable or clear Acoustical Grade Sealant.

## **AcoustiCORK™ PRODUCTS**

Sound Control Underlayment & Crack Suppression Membrane

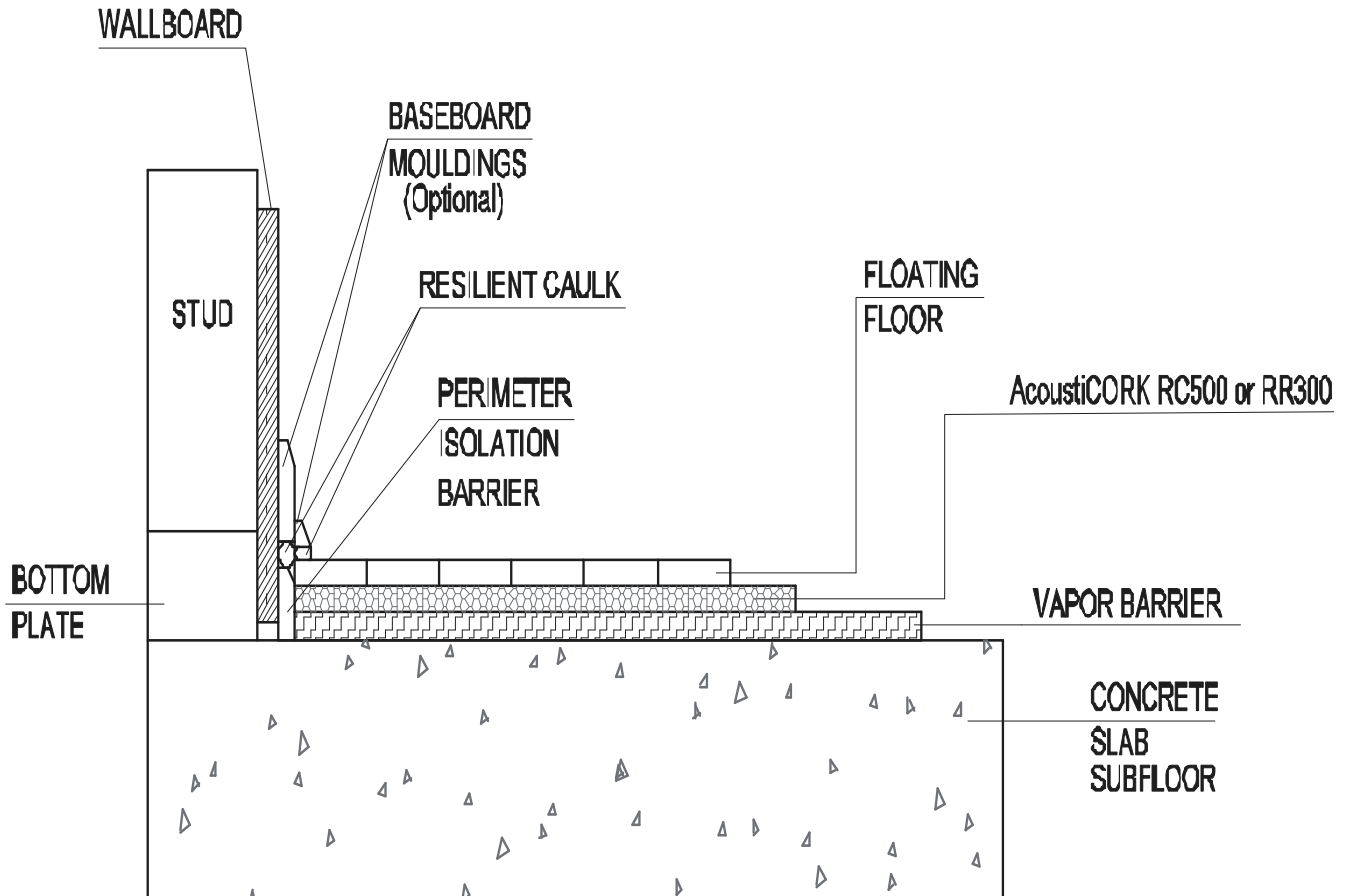
26112 110th Street • PO Box 25 • Trevor, WI 53179 • 1-800-558-3206 • 1-262-862-2311 • FAX 1-262-862-2500

Visit our Website at [www.acousticorkusa.com](http://www.acousticorkusa.com) for the most complete information on AcoustiCORK™

# AcustiCORK™ RR300/RC500

3.2mm Rubber & 5mm Rubber/Cork Sound Control Underlayments

**INSTALLATION INSTRUCTIONS**  
Floating Wood, Cork or Laminate  
Floors on a Concrete Slab Subfloor



## AcustiCORK™ PRODUCTS

Sound Control Underlayment & Crack Suppression Membrane

26112 110th Street • PO Box 25 • Trevor, WI 53179 • 1-800-558-3206 • 1-262-862-2311 • FAX 1-262-862-2500

Visit our Website at [www.acusticorkusa.com](http://www.acusticorkusa.com) for the most complete information on AcustiCORK™

# AcoustiCORK™ RR300/RC500

3.2mm Rubber & 5mm Rubber/Cork Sound Control Underlayments

## INSTALLATION INSTRUCTIONS Nailed Down Hardwood Floors on a Concrete Slab Subfloor

The following installation instructions are a recommendation, but are not intended as a definitive project specification. They are presented in an attempt to be used with recommended installation procedures as published by (NOFMA) the National Oak Flooring Manufacturers Association and the National Wood Flooring Association (NWFA).

### SUBFLOOR

1. All subfloor work should be in accordance with the recommended procedures as published by NOFMA and the NWFA.
2. Concrete subfloor should be level, properly sloped and structurally sound.
3. Inspect concrete subfloor for any open cracks and fill with a high-grade epoxy filler.
4. Remove any excess concrete lumps or residue that may interfere with the installation of the finished floor or the AcoustiCORK underlayment.

### TESTING FOR MOISTURE

1. Test the subfloor for excessive moisture prior to the installation of the AcoustiCORK underlayment.
2. If excessive moisture is present (normally >3 lbs. per 1000 s/f in 24hrs) in the subfloor, a vapor-retarding barrier must be installed to correct the problem. Consult the project architect or flooring manufacturer for details.

### VAPOR RETARDING BARRIER

1. Consult the most recent NOFMA & NWFA Installation Manuals for methods and materials associated with use of vapor retarding barriers.

### PERIMETER ISOLATION BARRIER

1. Install the precut 3" wide, 6mm thick perimeter isolation barrier vertically around the perimeter of the entire floor including any openings or protrusions such as electrical boxes, heating ducts, cold air returns, columns or pipes in the subfloor. The perimeter isolation strip **MUST be installed prior** to AcoustiCORK underlayment product being installed.
2. Starting from one end of the room, unroll the 3" isolation barrier material and place flat against the wall and flush to the floor.
3. After positioning, tape or staple (very close to the top edge) the isolation barrier firmly into place at all wall and vertical partitions surrounding the perimeter.
4. Never permanently mechanically fasten the isolation barrier, as this can severely diminish the acoustical performance of the sound rated floor.

5. After the floor is installed trim the isolation barrier flush with the surface of the finished floor, removing any staples or mechanical fasteners that were used to temporarily hold it in place.

### ACOUSTICORK RC500 or RR300 UNDERLAYMENT for NAILED DOWN HARDWOOD FLOORS

1. Cut the 5mm AcoustiCORK RC500 or 3.2mm RR300 material to the desired length and position the material in the space to be covered.
2. Butt the AcoustiCORK underlayment against the perimeter isolation barrier already installed at the floor/wall junction
3. Proceed to cover the entire room, making sure the sheets are tightly butted together, without gaps. Tape the joints with duct or fiberglass mesh tape. **For this type of installation it is recommended that the sheets not be glued to the subfloor.**
4. After completion, the AcoustiCORK RC500 or RR300 underlayment should cover the entire flooring area without gaps and with the joints taped.

### PLYWOOD SUBFLOOR (Nailing Bed)

1. Consult the most recent NOFMA or NWFA Installation Manuals for materials and methods associated with the installation of a plywood subfloor, as is commonly used with a Nailed Down Hardwood Floor applied over a radiant heated floor system or concrete subfloor. *Generally, two layers of 3/8" or 1/2" plywood are loose laid on the AcoustiCORK material and cross-lapped, either perpendicularly or on the diagonal, leaving a 1/4" gap at the joints. The two layers are fastened and/or adhered together using a fastener that is long enough to penetrate both layers of plywood, but not penetrate the AcoustiCORK underlayment product. (It is also possible to use a single layer of 3/4" plywood.)*

### NAILED DOWN WOOD FLOOR INSTALLATION

1. Follow manufacturers recommended instructions for the finished floor, including any vapor retarding membrane as required by the manufacturer.
2. Never drive a mechanical fastening device through the plywood nailing bed and the AcoustiCORK underlayment and into the subfloor, as this will severely diminish the acoustical value of the system.
3. If a baseboard or shoe molding detail is required leave a minimum 1/8" gap between the finished floor and the bottom of the baseboard or shoe. This gap cant be filled with a non-hardening, color matching, paintable or clear Acoustical Grade Sealant.

## AcoustiCORK™ PRODUCTS

### Sound Control Underlayment & Crack Suppression Membrane

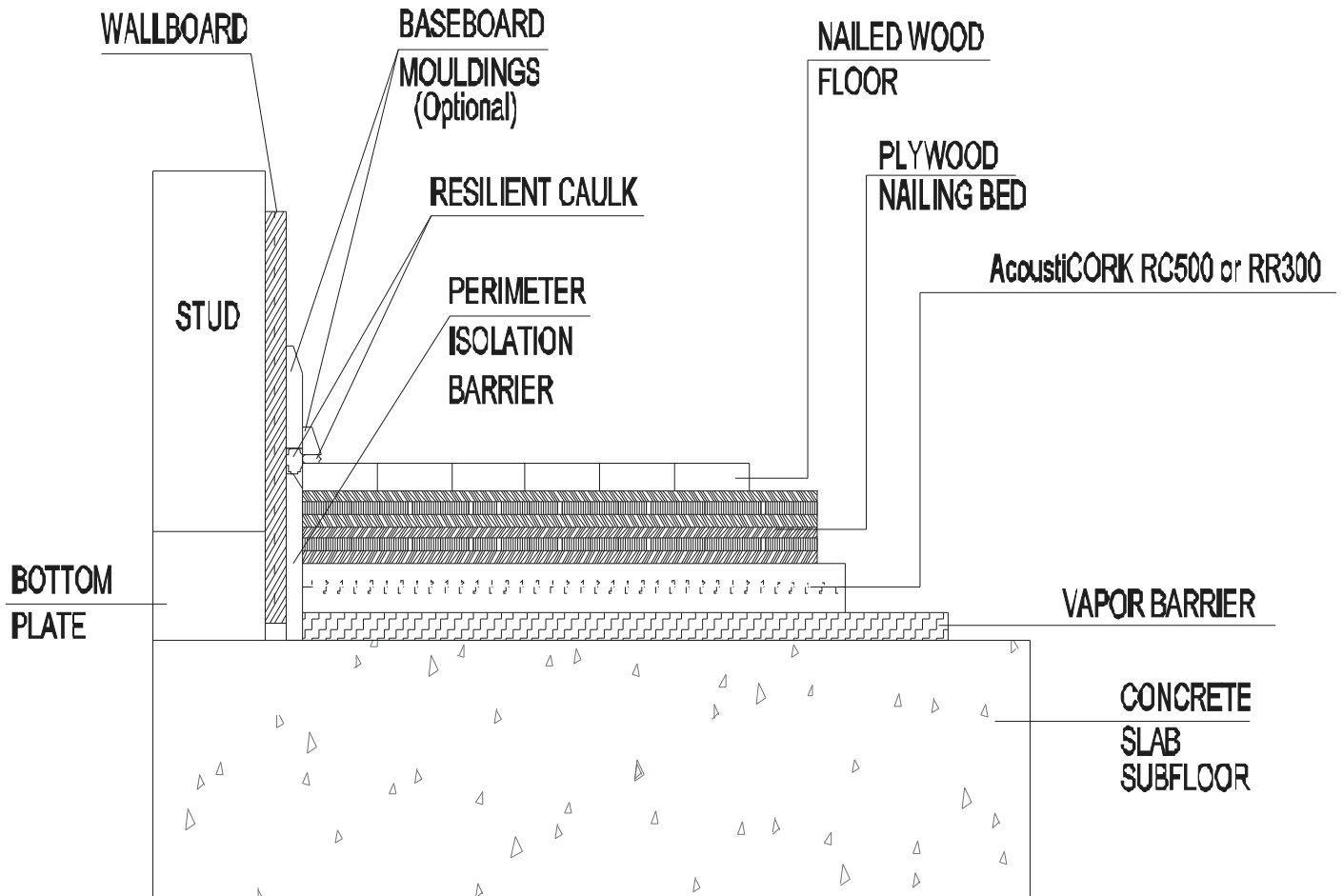
26112 110th Street • PO Box 25 • Trevor, WI 53179 • 1-800-558-3206 • 1-262-862-2311 • FAX 1-262-862-2500

Visit our Website at [www.acousticorkusa.com](http://www.acousticorkusa.com) for the most complete information on AcoustiCORK™

# AcoustiCORK™ RR300/RC500

3.2mm Rubber & 5mm Rubber/Cork Sound Control Underlayments

## I INSTALLATION INSTRUCTIONS Nailed Down Hardwood Floors on a Concrete Slab Subfloor



## AcoustiCORK™ PRODUCTS

Sound Control Underlayment & Crack Suppression Membrane

26112 110th Street • PO Box 25 • Trevor, WI 53179 • 1-800-558-3206 • 1-262-862-2311 • FAX 1-262-862-2500

Visit our Website at [www.acousticorkusa.com](http://www.acousticorkusa.com) for the most complete information on AcoustiCORK™



### 5mm & 10mm Rubber/Cork Sound Control Underlayment

The following installation instructions are offered as a recommendation, but are not intended as a definitive project specification. They are presented in an attempt to be used with recommended installation procedures as published by the National Oak Flooring Manufacturers Association (NOFMA) and the National Wood Flooring Association (NWFA).

#### **SUBFLOOR**

1. All subfloor work should be in accordance with the recommended procedures as published by NOFMA and the NWFA.
2. Concrete subfloor should be level, properly sloped and structurally sound.
3. Inspect concrete subfloor for any open cracks and fill with a high-grade epoxy filler.
4. Remove any excess concrete lumps or residue that may interfere with the installation of the AcoustiCORK RC Series 5mm or 10mm underlayment.

#### **TESTING FOR MOISTURE**

1. Test the subfloor for excessive moisture prior to the installation of the AcoustiCORK PR60.
2. If excessive moisture is present (normally >3 lbs. per 1000 s/f in 24hrs with a Calcium Chloride test) in the subfloor, corrective action must be taken. Consult the project architect, flooring manufacturer and/or the most recent NOFMA & NWFA Installation Manuals for methods and materials for dealing with excessive subfloor moisture.

#### **PERIMETER ISOLATION STRIP**

1. Install the precut 3/4" wide, 6mm thick perimeter isolation barrier vertically around the perimeter of the entire floor including any openings or protrusions such as electrical boxes, heating ducts, cold air returns, columns or pipes in the subfloor installation. The perimeter isolation strip **MUST be installed prior** to AcoustiCORK RC Series underlayment being installed.
2. Remove the release liner from the self-adhesive backing and place flat against the wall, flush to the floor.
3. After positioning, press the isolation barrier firmly into place at all wall and vertical partitions surrounding the perimeter using the AcoustiCORK underlayment.
4. Never mechanically fasten the isolation barrier, as this will severely diminish the acoustical performance of the entire sound rated floor system.

5. After the finished floor is installed the perimeter isolation barrier should be trimmed flush with the surface of the finished floor.

#### **ACOUSTICORK RC Series UNDERLAYMENT for GLUED DOWN HARDWOOD FLOORS**

1. Cut the 5mm or 10mm AcoustiCORK RC Series material to the desired length and position the material in the space to be covered.
2. Butt the AcoustiCORK RC Series 5mm or 10mm underlayment against the perimeter isolation barrier already installed at the floor/wall junction.
3. Pull the loose laid material back at least half the length of the cut material. Using a properly sized U or V-notched trowel (minimum 3/32") apply a **100% Polyurethane Based Wood Flooring Adhesive**, to the concrete subfloor. Repeat the process for the other half of the sheet, rolling in both directions with a 75 or 100# floor roller.
4. Proceed to cover the entire room, making sure the sheets are tightly butted together, without gaps. Rolling the floor area in both directions using a 75 or 100# floor roller. **Never mechanically fasten the sheets to the subfloor, as this will severely diminish the acoustical value of the product.**
5. After completion, the AcoustiCORK RC Series underlayment should cover the entire floor area without gaps and be securely bonded with the joints tightly butted.

#### **GLUED DOWN WOOD FLOORING**

1. Follow the manufacturer's recommended instructions for installing the finished floor, using the trowel size specified for an installing the finished flooring product using a **100% Polyurethane Based Wood Flooring Adhesive**.  
**Note Regarding Adhesives: The use of water based adhesives for installing either the RC Series underlayment to the subfloor or the finished flooring to the underlayment is typically not recommended. Please contact us for a list of recommended adhesives.**
2. If a baseboard or shoe molding detail is required, leave a minimum 1/8" gap between the finished floor and the bottom of the shoe or baseboard. This gap must be filled with a non-hardening, color matching, paintable or clear Acoustical Grade Sealant.

## AcoustiCORK™ PRODUCTS

### Sound Control Underlayment & Crack Suppression Membrane

26112 110th Street • PO Box 25 • Trevor, WI 53179 • 1-800-558-3206 • 1-262-862-2311 • FAX 1-262-862-2500

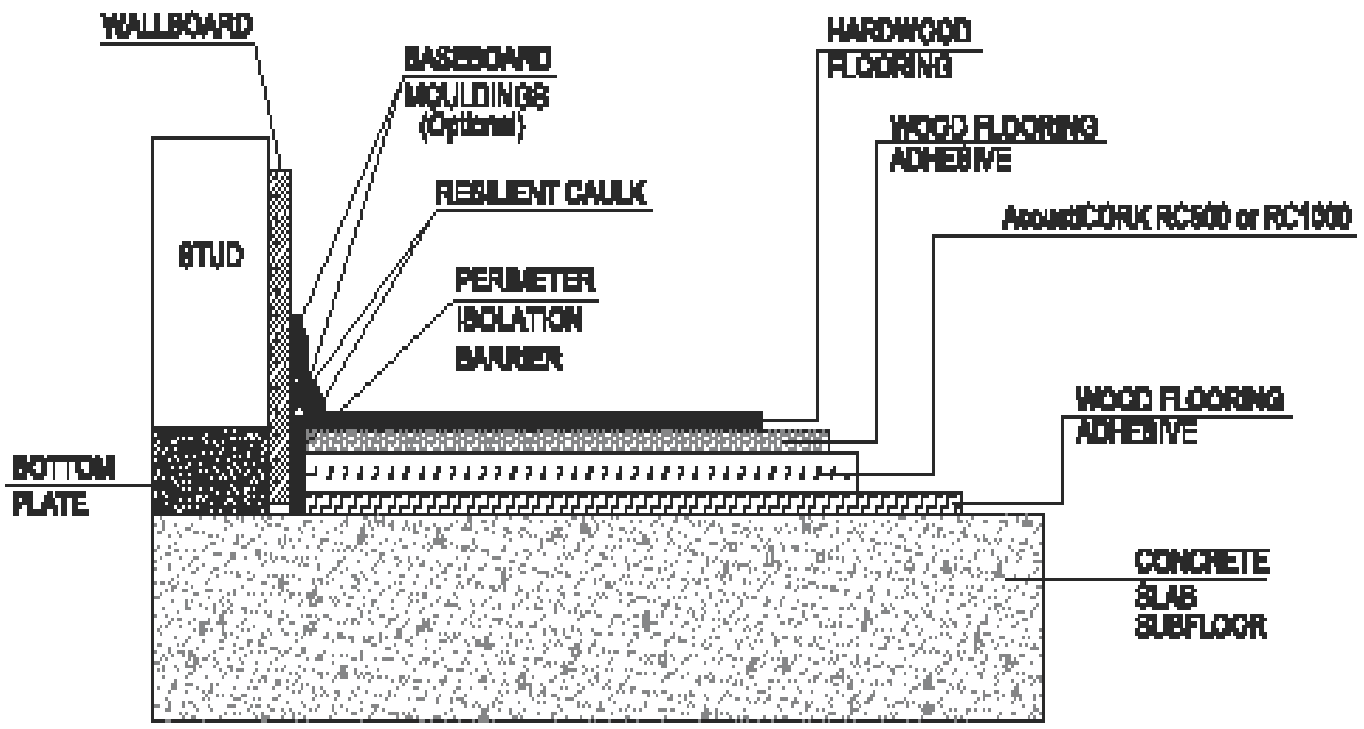
Visit our Website at [www.acousticorkusa.com](http://www.acousticorkusa.com) for the most complete information on AcoustiCORK™

# AcoustiCORK™ RC500/RC1000

INSTALLATION INSTRUCTIONS  
Glued Down Hardwood Floors  
on a Concrete Slab Subfloor

5mm & 10mm Rubber/Cork Sound Control Underlayment

.....



## AcoustiCORK™ PRODUCTS

Sound Control Underlayment & Crack Suppression Membrane

26112 110th Street • PO Box 25 • Trevor, WI 53179 • 1-800-558-3206 • 1-262-862-2311 • FAX 1-262-862-2500

Visit our Website at [www.acousticorkusa.com](http://www.acousticorkusa.com) for the most complete information on AcoustiCORK™