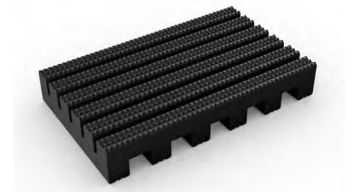


Close mesh matting for busy industrial areas with frequent, heavy-wheeled traffic.



Wheel proof, certified slip resistant and impermeable to fluids, Firmagrip is perfect for busy industrial areas where trolleys, carts and other wheels are in frequent use.

The close mesh construction provides a smooth surface for wheels to glide over while still ensuring excellent drainage for any spillages. Made from non-porous flexible PVC, it's resistant against chemicals, oils and acids, and easy to cut to fit on site.



Features:



Diamond-tread surface



Two-layer construction



Close mesh construction



Made from non-porous PVC



Comes in 33' rolls



Benefits:



Certified slip resistant (DIN 51130:RI1)



Excellent drainage (DIN 51130:VI0)



Ideal for wheeled traffic



Resistant to chemicals, acids, oils



Cut to fit on site, contours to uneven surfaces



Data sheet

Standard sizes:

Product	Firmagrip
Height	9/16" (14mm)
Standard roll options	33' x 2' (10 x 0.6m)
	33' x 3' (10 x 0.91m)
	33' x 4' (10 x 1.22m)
Weight	2.14 lbs/sq.ft (10.5 kg/m ²)

Tolerances:

	Height (+/- 0.05")	Length (0+1.0')	Width (+/- 1/2")
Firmagrip	9/16"	33'	2' 3' 4'

All dimensions are nominal

Technical information:

Acoustic	Excellent sound absorption
Chemical	Resistant to most acids, alkalines and oils.
Composition	Made from flexible Polyvinyl Chloride (PVC).
Environment	Firmagrip is 100% recyclable. We don't use any substances included in the SVHC list under REACH in any of our matting products.
Hygiene	Made from non-porous PVC that's naturally resistant to bacteria growth.
Reversion	Thermoplastic shrinkage can result in size reductions up to 2%. This may be accelerated in hot environments.
Slip resistance	DIN 51130: R11, V10
Thermal	Designed to function at temperatures from -23°C and up to +60°C. Slight size variation may occur at temperature extremes.
UV light	Resistant to PVC degradation
Warranty	Four years.

Installation:

Firmagrip's one-piece construction means installation is simple:

- Comes in 33' rolls
- Easy to cut to fit on site
- Contours to uneven surfaces

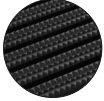
Cleaning:

Keeping Firmagrip looking good is easy:

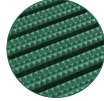
- Lift or roll to clean
- Easy to clean with a high pressure hose

Product data sheet

Colors:



Black



Green



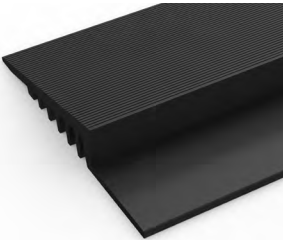
Red

More colors
available
upon request

Ancillaries:

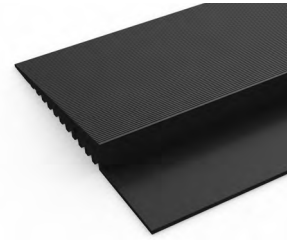
> Firmagrip

PVC edging (H: 9/16, W: 2 1/2")



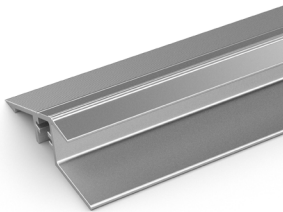
Supplied in rolls of 33' (10.1m) length with cold welding paste. Comes in black, dark gray, dark brown, holly green, Oxford blue, yellow. Size: 9/16" x 2 1/2" x 33' (14mm x 60mm x 10.1m)

PVC edging (H: 9/16, W: 3 3/4")



Supplied in rolls of 33' (10.1m) length with cold welding paste. Comes in black, dark gray and yellow. Size: 9/16" x 3 3/4" x 33' (14mm x 100mm x 10.1m)

Aluminum edging (H: 5/8")



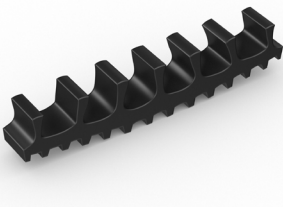
Supplied in sections of 6'6" (2m) length with fixing screws and plugs. Comes in anodized aluminum and powder coated yellow. Size: 5/8" x 1 13/16" x 6'6" (15mm x 45mm x 2m)

PVC snap track (H: 9/16")



Two-part snap track that can be welded together to join rolls end-to-end or side-to-side to cover large areas. Supplied with cold welding paste. Comes in dark gray. Size: 9/16" x 8'2" (14mm x 2.5m)

Connector clips: side-to-side (H: 9/16")



For joining sections of matting together side-to-side. Supplied in packs of 10