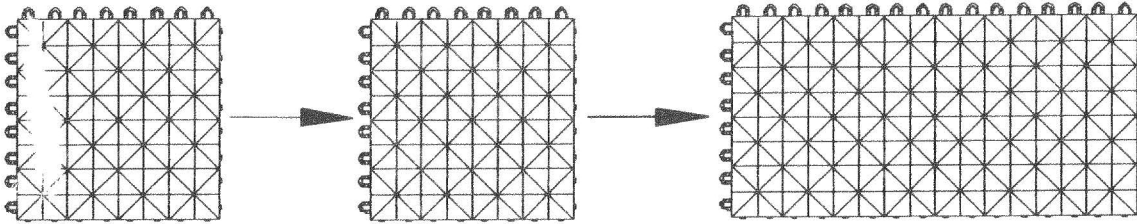


GREATMATS TENNIS COURT TILE MT2 OUTDOOR COURT TILE XT3

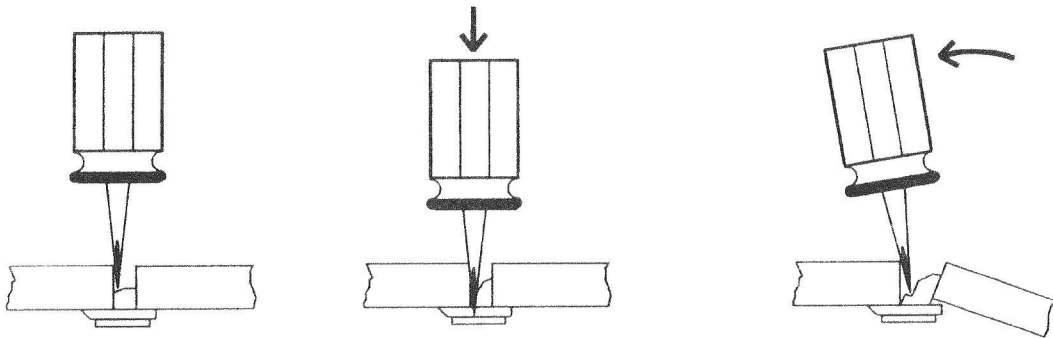
ASSEMBLY INSTRUCTION SHEET



TILE ASSEMBLY PROCEDURE

Assembly is accomplished by always orienting tile loops in same direction (as illustrated) prior to locking.

Care should be taken to align prongs with loops prior to striking with wooden mallet or firmly pressing directly above latch.



UNLATCHING PROCEDURE

(1&2) Insert small screwdriver between latch and adjacent tile. Push screwdriver until depth (as illustrated) is reached.

(3) Rotate screwdriver prying latch upward from loop until it is unlocked. Repeat operation to adjoining locks.

CAUTION: USE OF UNDUE FORCE MAY DAMAGE LOCKING

EDGE ASSEMBLY

(1) 12" edge sections are available with either male or female locking devices. Assembly is accomplished as per illustration by selecting the proper edge locking system to correspond with the adjoining tile locks. Each 12" edge system should be assembled to correspond with each 12" tile section without overlapping the locking system between tiles.

CORNER ASSEMBLY

(2) With edges installed, push corner assembly plug through accommodation holes located on each end of beveled edge for positive locking. Tile corners with two female loops will require trimming as per illustration to provide clear access of corner plugs to attaching edge holes.

