

GREATMATS

TurboTile Diamond and Perforated Garage Floor Tile Installation Instructions

Installing the TurboTile Garage Floor Tiles are a snap. We recommend reading these instructions thoroughly and completely before beginning. Feel free to contact our customer service team at 877-822-6622 or info@greatmats.com if you have questions.

Supplies Needed

1. Tape Measure
2. Pen or Marker
3. Straight Edge
4. Power Saw

Installation

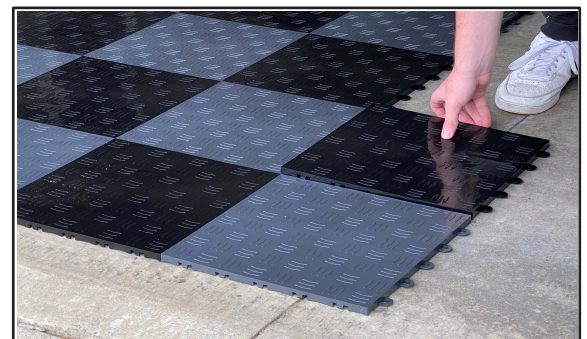
1. Place first tile in a corner with loop sides facing out.



2. Keeping all additional tiles facing in the same direction, place tabs of new tiles over loops of already laid tiles and push down until they snap into place.



3. Work out evenly in both directions.



4. Add border strips in same manner, if desired.



Cutting Tiles

1. Using tape measure, measure distance between existing tiles and wall.



2. Using pen or marker, mark that distance on the tile you'd like to cut, keeping in mind direction of the tile.



3. Cut along the line using a power saw. A band saw works the best.

